



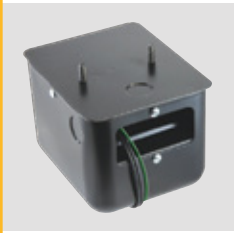
**1092-H**



**Burner Manufacturer:** Cleaver Brooks,  
Industrial Combustion  
**HV Terminal:** Rajah Connector  
**Junction Box:** Internal  
**Replaces:** Webster: 612-8A021



**1092-PF-G**



**Burner Manufacturer:** Power Flame  
**HV Terminal:** Thumb Screw  
**Junction Box:** Internal  
**Description:** 1/4-20 x 1" Mounting Studs,  
One Ground  
**Replaces:** Webster: 612-6A056



**1092-S**



**Burner Manufacturer:** Gordon Piatt  
**HV Terminal:** Thumb Screw  
**Junction Box:** Internal  
**Replaces:** Webster: 612-6A020/612-6A072



**1092-F**



**HV Terminal:** Thumb Screw  
**Description:** Conduit Connection  
**Replaces:** Webster: 612-6A7,  
France: 6EEGW-2



**1092-K**



**Burner Manufacturer:** Dunham-Bush, Iron Fireman  
**HV Terminal:** Rajah Connector  
**Junction Box:** Internal  
**Description:** 1/4-20x1" Mounting Studs  
**Replaces:** Webster: 612-8AB017



**1092-IC**



**Burner Manufacturer:** Cleaver Brooks,  
Industrial Combustion  
**HV Terminal:** Rajah Connector  
**Junction Box:** Internal  
**Description:** 1/4-20 x 1" Mounting Studs



Burner Manufacturer	Allanson	Dongan	France	Webster	Sid Harvey	Thermolok
<b>10,000 Volt Secondary Mid Point Ground 120 Volt - Less Mounting Plate Replacement Type</b>						
UNIVERSAL 6 WAY	421-BT636	LJH-90	LAUV	312-25AX0600	T1-15	T-628
UNIVERSAL 5 WAY	421-BT384			312-25AX0500		
	421-BT066					
	421-BT104	A10-SR10	LGCV	312-24AB0237	T-31N	
	421-BT276	A10-SW10	LGEV	312-25AB0237	T-17FM	C-551
	421-BT290	A10-SQ10	LGDV	312-24AB0202	T-17N	C-554
	421-BT299	A10-SJ10	LFBV	312-25A0202	T-21M	
	421-BT332	A10-SV10	LGFV	312-25AB0202	T-17M	C-555
	421-BT387	A10-SF10	LFAV	312-24A0202	T-21N	
<b>INDUSTRIAL GAS TYPE IGNITION TRANSFORMERS - 6,000 Volt Secondary One End Ground, 120 Volt, 50/60 Hz</b>						
CLEAVER BROOKS	1092-H	A060SJ5		612-8A021		
GORDON PIATT	1092-S	GPA-06		612-6A020/ 612-6A072		
IRON FIREMAN, DUNHAM-BUSH	1092-K			612-8AB017		
BX CONNECTOR	1092-F	A06-SA6	6EEGW-2	612-6A7	T-246N	
NORTH AMERICAN	1092-NA			612-8A02		
POWER FLAME	1092-PF	PFA-06		612-6A056		
RAY BURNER	1092-N	A06-SD7	3RAFYR-14	613-6A10	T-193N	
WEBSTER (PRIMARY HAS 3 WIRES)	1092-SG					
<b>INDUSTRIAL GAS/OIL TYPE IGNITION TRANSFORMERS 10,000 Volt Secondary One End Ground 120 Volt</b>						
OIL APPLICATION	542-A	A10-LA22		312-6A0456		
CLEAVER BROOKS	542-H	A10-LN2X				
GORDON PIATT	542-GP			312-9A0456		
POWER FLAME	542-PF					

Burner Manufacturer	Allanson	Dongan	Beckett	France	Carlin	Sid Harvey
OMNI® IGNITOR	2275U		< NO UNIVERSAL AVAILABLE >			T96I
AERO	2275-456		51828U	10SAY-56	41000-SO-AR	T87E
BECKETT A, AF, AFG	2275-628G	SSI-BK103	51771U	10SAY-04	41000-SO-BK1	T92E (1)
BECKETT AFII	2275-658		51805U	10SAYL-70		T97E
BECKETT S	2275-605		51824U	10SAY-05	41000-SO-BK2	T90E
CARLIN 17.5, 200, 201, 500, 501, CRD	2275-629		51840U	10SAY-16	41000-SO-SC	T95E
CARLIN 99, 100, 101, CRD	2275-630	SSI-CR205	51826U	10SAY-15	41000-SO-CAS	T94E
CARLIN 601 & UP	2275-633		51880U		41000-SO-LC	
WAYNE HI SPEED M/MH	2275-619	SSI-WN202	51825U	10SAY-03	41000-SO-WA3	T93E
WAYNE E	2275-620	SSI-WN208	51827U	10SAY-30	41000-SO-WA2	T88E
WAYNE HS	2275-647		51836U	10SAY-31	41000-SO-WA1	T89-10E
WEIL MCLAIN	2275-653		51837U	10SAY-32	41000-SO-WM	T96E
IGNITOR KIT	2275-KIT1		51835	10SAY-KIT	41000-SO-KIT	T97K